

E265C E305C

PRELIMINARY



	E265C	E305C
NET FLYWHEEL POWER	143 kW - 192 hp	154 kW - 207 hp
MAX OPERATING WEIGHT	27900 Kg	31590 Kg
BUCKET CAPACITY	0.58 - 1.40 m ³	0.60 - 1.65 m ³



BUILT AROUND YOU

E265C/E305C



C SERIES FOR INCREASED PRODUCTIVITY

- The E265C and E305C feature a high efficiency hydraulic system, minimizing friction losses and pressure drops during operation.
- Controlled by New Holland's Advanced Electronic Processor (A.E.P.) the machines benefit from 100% pump utilization, to provide highly responsive controls for the operator and extra power when needed during tough digging.
- Newly designed joysticks reduce operator fatigue, allow proportional auxiliary function control and help to improve the overall machine controllability
- The new C Series excavators work faster and with more power, boosting productivity on site by up to 10%.

C SERIES FOR IMPROVED FUEL ECONOMY

- The Tier 4 interim compliant diesel engines in the new C Series excavators use Selective Catalytic Reduction (SCR), with the addition of a Diesel Exhaust Fluid, to reduce harmful emissions. These efficient engines use up to 10% less fuel than previous machines, reducing operating costs for the customer.
- The new C Series excavators protect the environment and increase profitability, with a 10% fuel saving.

C SERIES EVOLUTIONARY COMFORT AND SAFETY

- The New Holland EVO operator's cab provides class-leading levels of comfort, with full ROPS/FOPS protection. A roof guard, internal roll over structure and a rear view camera are all standard. An innovative new monitor in the cab allows the operator to see the view to the rear of the machine, while monitoring the excavator's operating systems.
- The new C Series cab provides a low fatigue working environment, allowing operators to maximise performance.

C SERIES RELIABILITY BUILT IN

- With a proven heavy duty design, New Holland excavators continue to provide the ultimate reliability and durability that customers expect. Best-in-class serviceability results in minimal downtime, with a full range of optional guards and protective structures available to meet the needs of varying industry sectors.
- The new C Series from New Holland, built to provide maximum uptime for the customer.



E265C/E305C

SPECIFICATIONS

ENGINE TIER 4 INTERIM

E305C
Make and model..... FPT Industrial F4HFE613P
Net flywheel power (ISO 14396/ECE R120) 154 kW/207 hp (2000 rpm)
Maximum torque at 1400 rpm..... 912 Nm

E265C
Make and model..... FPT Industrial F4HFE613R
Net flywheel power (ISO 14396/ECE R120) 143 kW/192 hp (2000 rpm)
Maximum torque at 1400 rpm..... 848 Nm

E265C / E305C
Displacement..... 6.7 l
N. of cylinders /Bore x stroke 6 / 104 x 132 mm
Type diesel, common rail, direct injection,turbocharged, intercooler
Selective Catalytic Reduction (SCR), exhaust after treatment with AdBlue injection
Electronic engine rpm control, dial type, Auto-Idling device / 3-stage air filter with indicator and precleaner / Side by side cooling system with separate AC condenser / Air intake heater -25°C outside temperature start / Autostop Electrical Refuelling Pump .The engine complies with 97/68/EC standards Tier 4 interim.

ELECTRICAL SYSTEM

E265C / E305C
Voltage / Alternator 24V /70 A
Starter motor 4 kW
Maintenance-free batteries..... 2 x 12V/ 160 Ah
Master electrical disconnect switch, Horn / work lights: Boom-mounted 2, Frame-mounted 1

TRASMISSION

E265C / E305C
Typehydrostatic, two-speed, Automatic DownShift
Travel motors axial piston type, double displacement, shock absorbent
Brakes.....oil bath disc type, automatically applied and hydraulically released
Final drive.....oil bath, planetary reduction
Travel motor, brake and planetary gear protected within the track frame
Gradeability (continuous) 70% (35°) (limited by engine lubrication)
Travel speeds:low 0 - 3.6 km/h / high 0 - 5.8 km/h
E305C
Drawbar pull 254 kN
E265C
Drawbar pull 244 kN

UNDERCARRIAGE

E265C / E305C
X-frame Heavy Duty undercarriage design, Hydraulic track adjusters, shockabsorbing recoil springs.
Track rollers / Carrier rollers 9 / 2 (each side)
Gauge 2390 mm (EL) , 2590 mm(LC)
Reinforced track chain with greased and sealed bushings, center track guard
Shoes (mm) 600-700 800-900 Triple grouser
E305C
Length of track on ground..... 4004 mm
E265C
Length of track on ground..... 3846 mm

HYDRAULIC SYSTEM

E265C / E305C
High capacity double pumps ; variable displacement
electronic delivery adjustment / revert in neutral automatically to zero
Main Control Valve with Fail Safe Function and Anti drift valve
H.A.O.A. (Hydrotronic Active Operation Aid)
E.S.S.C. (Engine Speed Sensing Control)
D.O.C. (Dipper Optimised Control)
C.P.B. (Continuous Power Boost)
large TFT color display /self diagnosis / rear cam view
3 Working Modes: -Standard - Heavy - ECO
2 Attachments Modes:A = two way flow / B = one way flow (breaker)
attachment flow and pressure setting from cab / 18 presets storage

Pipe pressure discharge button inside cab
Maximum delivery..... 2 x 246 l/min
Auxiliary circuit gear type pump max. 21 l/min
Maximum operating pressure:
Equipment/travel..... 34.3 MPa
Power Boost..... 37.7 MPa
Hydraulic cylinders, double effect, end stroke cushioning:
- Positioning (only triple articulation 150 x 1222 mm
Auxiliary hydraulic valve for hydromechanical tools (Hammer/Crusher)
Auxiliary circuit gear type pump max. 21 l/min

E305C
- Lift (2) - bore x stroke 140 x 1305 mm
- Dipperstick (1) - bore x stroke 150 x 1675 mm
- Bucket (1) - bore x stroke 130 x 1208 mm
Swing 29.0 MPa
E265C
Swing 28.5 MPa
Lift (2) - bore x stroke 135 mm x 1234 mm
Dipperstick (1) - bore x stroke 145 mm x 1635 mm
Bucket (1) - bore x stroke 125 mm x 1200 mm

CAPACITIES

E265C / E305C
Engine Lube oil 18.3
Coolant..... 25.0
Fuel tank..... 460.0
Urea tank (DEF-AdBlue)..... 88.0 l
Hydraulic system (incl. 170l tank)..... 280.0
Swing drive (gear oil) 7.4 l / Travel drive (each) 2X5.0 l / Swing grease bath 19.2 kg

SWING

E305C
Swing motor..... axial piston type, oil bathed
Swing brakeoil bath disc type, automatically applied, hydraulically released
Final drive.....oil bath, planetary reduction
Slew ring..... grease bath, single-row, shear-type ball bearing
Swing speed..... 0 - 11.0 rpm
Max. pressure..... 9.0 Mpa
E265C
Swing motor..... axial piston type, oil bathed
Swing brakeoil bath disc type, automatically applied, hydraulically released
Final drive.....oil bath, planetary reduction
Slew ring..... grease bath, single-row, shear-type ball bearing
Swing speed..... 0 - 11.0 rpm

CAB AND CONTROLS

E265C / E305C
EVO operator cabine - evolution in comfort & safety compliant to ROPS and FOPS standards (acc to EN 98/37/EC) / Automatic air conditioner, heater and defroster / Transparent cab roof / mechanical seat suspension (optional: pneumatic), Retractable seat belt / 2 piloted cross path manipulators actuate all equipment movements and swing / 2 pedals with hand levers control all track movements, counter-rotation /Safety lever to neutralise the piloting circuit / Adjustable armrests / Radio set / Flexible antenna / Mirrors left and right / 12 Volt power supply / Low effort Lift-up front windshield (Laminated safety glass) with Sunshade / Two-speed intermittent operation windshield wiper / Sliding upper door window / Rear window emergency exit / washable floor mat / Positive filtered ventilation / Multi-function control monitor with integrated Rear view camera display / Displayed Parameters: water temperature, hour, fuel rate, clock, work mode, auto-idle, glow AdBlue level , etc / Optical warning: overheat, oil pressure, alternator, minimum fuel & AdBlue level, hydraulic filter , air filter, etc / Acoustic Alarm: overheat, engine oil, overload / 4 Hydraulic hyper viscous dampening cab mounts
E305C
External guaranteed sound level (EU Directive 2000/14/EC)LwA 103 dB(A)
Operator cab sound pressure level (ISO 6396)LpA 71 dB(A)
E265C
External sound level ISO 6395 EU Directive 2000/14/ECLwA 103 dB(A)
Operator cab sound pressure level (ISO 6396)LpA 71 dB(A)

OPTIONS

E265C / E305C

One piece boom or triple articulation
 Dipperstick heavy duty protection
 Centralised remote boom lubrication (optional:Automatic lubrication)
 Multipurpose rock and heavy duty buckets (see back page)
 Front and Rear additional Track Guide
 Lower Frame Guard (heavy duty undercover)
 2 cab mounted Working Lights, Rotating Beacon
 Rain Guard & Sun Visor
 Hammer / Crusher circuit piping / Low Flow Rotating Bucket circuit
 Proportional Hand Control (Hammer / Crusher / Low Flow on joystick)
 Proportional Foot Control (Hammer / Crusher)
 Object Handling Kit (Hose rupture valve, overload warning & lift eye)

Hydraulic Antitheft Device
 Quick Coupler Hydraulic Provision
 Demolition package (cab & structure guards, cylinder protection)
 Biogradable Hydraulic Oil

E305C

Dipperstick: 2100 - 2400 - 3200 - 4000 mm (dirt seal on bucket pins)
 Bolt-on front guard FOGS ISO 10262

E265C

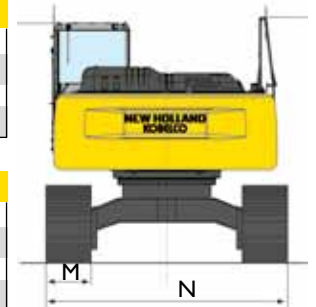
Dipperstick: 2160 - 2500 - 2980 - 3660 mm (dirt seal on bucket pins)
 Bolt-on front guard FOGS ISO 10262

E265C

OPERATING WEIGHT

MONO BOOM		EL VERSION				LC VERSION			
M - Shoe width	mm	600	700	800	900	600	700	800	900
N - Maximum width	mm	2990	3090	3190	3290	3190	3290	3390	3490
Operating weight*	kg	26300	26600	26900	27200	26500	26800	27100	27400
Specific ground pressure	bar	0.59	0.51	0.45	0.41	0.59	0.51	0.45	0.41

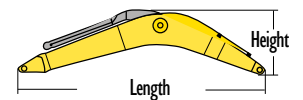
TRIPLE ARTICULATION BOOM		EL VERSION				LC VERSION			
M - Shoe width	mm	600	700	800	900	600	700	800	900
N - Maximum width	mm	2990	3090	3190	3290	3190	3290	3390	3490
Operating weight*	kg	26800	27100	27400	27700	27000	27300	27600	27900
Specific ground pressure	bar	0.60	0.52	0.46	0.41	0.6	0.52	0.46	0.42



COMPONENT WEIGHTS & DIMENSIONS (mm)

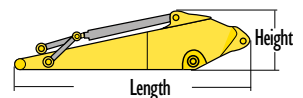
BOOM		MONO BOOM		TRIPLE ARTICULATION	
Length	mm	6200		min 4645 - max 6235	
Height	mm	1610		min 3295 - max 1445	
Width	mm	752		752	
Weight	kg	2100		2640	

* includes arm cylinder piping & pin



ARM		2160	2500	2980	3660
Length	mm	3283	3586	4058	4923
Height	mm	1025	895	893	895
Width	mm	325	325	325	325
Weight	kg	1150	1200	1350	1500

* Includes bucket cylinder linkage and pin



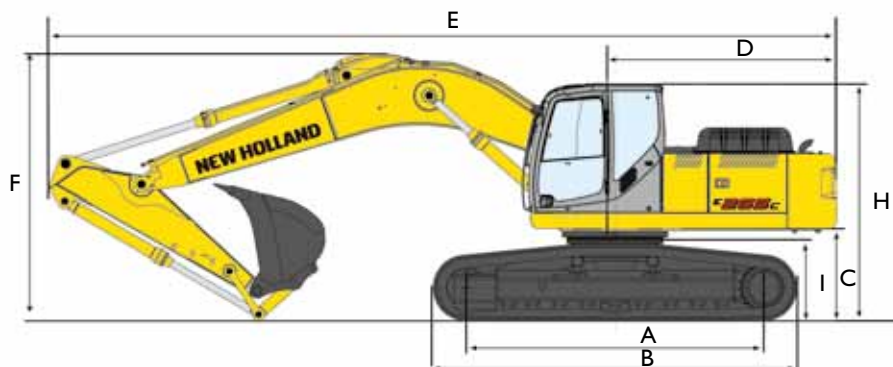
OTHER COMPONENT WEIGHTS

Upper Structure (w/o front attachment & counterweight)	kg	7150
Undercarriage EL (shoes 600 mm)	kg	8500
Undercarriage LC (shoes 600 mm)	kg	8400
Counterweight	kg	6200
Bucket 1.1m ³	kg	820

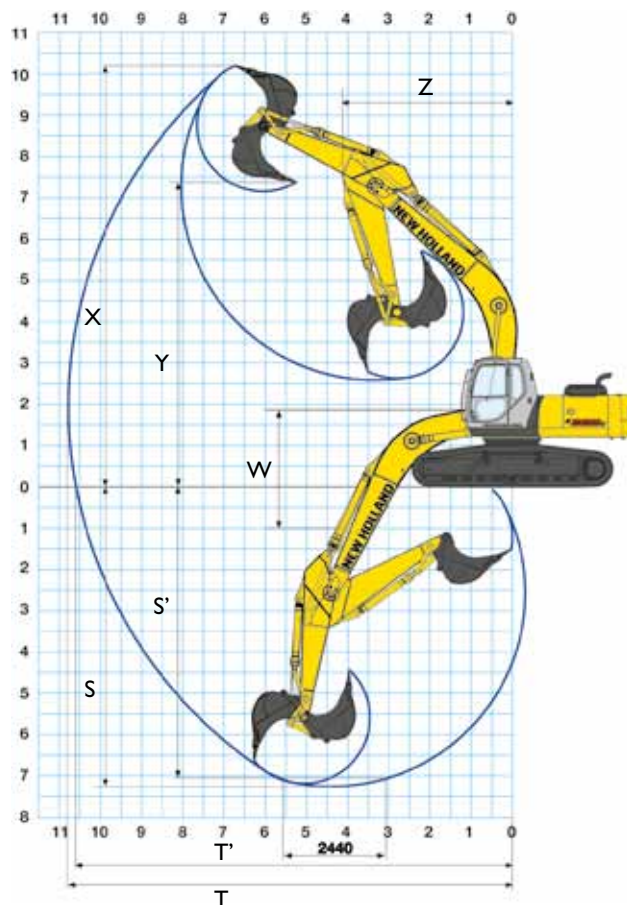
E265C

MONO BOOM

DIGGING PERFORMANCE & DIMENSIONS (mm)



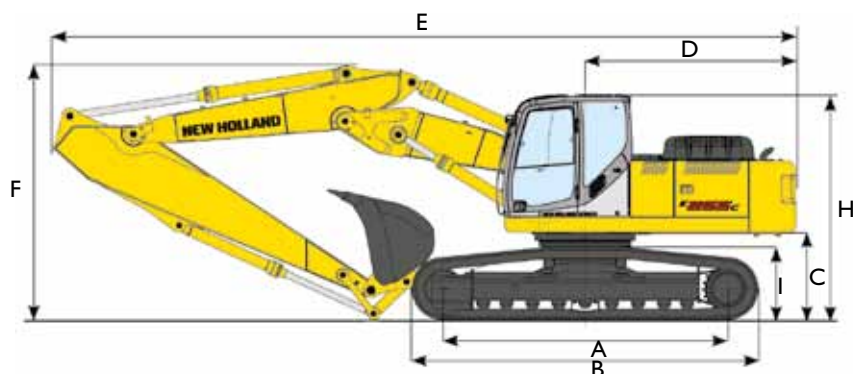
		E265C MONO BOOM	
A - Center distance of tumbler	mm	3846	
B - Overall length of crawler	mm	4648	
C - Ground clearance of rear end	mm	1100	
D - Radius of rear end	mm	3020	
E - Overall length			
Arm 2160	mm	10290	
Arm 2500	mm	10170	
Arm 2980	mm	10120	
Arm 3660	mm	10130	
F - Boom height in transport position			
Arm 2160	mm	3445	
Arm 2500	mm	3375	
Arm 2980	mm	3210	
Arm 3660	mm	3320	
H - Height to cab top	mm	3105	
I - Crawler height at tumbler center	mm	969	



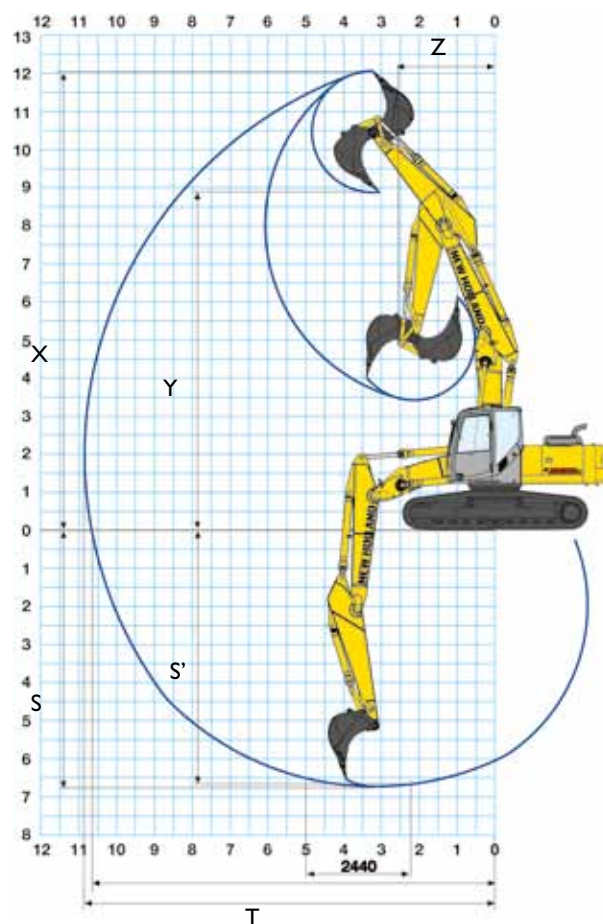
DIPPERSTICK		2160	2500	2980	3660
S - Max. digging depth	mm	6109	6459	6939	7594
S' - 2.4 m level. digging depth	mm	5877	6250	6759	7443
Min finish radius at ground level	mm	3863	3299	2676	2135
T - Max. digging reach	mm	9605	9875	10290	10960
T' - Max. digging reach at ground level	mm	9421	9694	10118	10799
W - Min. dumping clearance	mm	3447	3067	2587	1907
Max. vertical digging depth	mm	4045	4546	5153	6007
X - Max. digging height	mm	9611	9705	9840	10258
Y - Max. dumping clearance	mm	6686	6751	6906	7307
Z - Min. swing radius	mm	3927	3923	3921	3935
Height at min. swing radius	mm	8174	8060	7994	7968

E265C

TRIPLE ARTICULATION BOOM DIGGING PERFORMANCE & DIMENSIONS (mm)



		E265C TRIPLE ART.
A - Center distance of tumbler	mm	3846
B - Overall length of crawler	mm	4648
C - Ground clearance of rear end	mm	1100
D - Radius of rear end	mm	3020
E - Overall length		
Arm 2160	mm	10340
Arm 2500	mm	10200
Arm 2980	mm	10190
Arm 3660	mm	10160
F - Boom height in transport position		
Arm 2160	mm	3240
Arm 2500	mm	3205
Arm 2980	mm	3125
Arm 3660	mm	3325
H - Height to cab top	mm	3105
I - Crawler height at tumbler center	mm	969



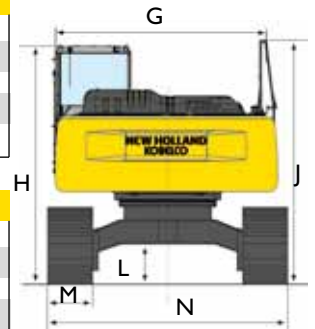
DIPPERSTICK		2160	2500	2980	3660
S - Max. digging depth	mm	5741	6062	6521	7209
S' - 2.4 m level. digging depth	mm	5532	5871	6362	7066
Min finish radius at ground level	mm	1550	1270	-	-
T - Max. digging reach	mm	9691	9975	10401	11078
T' - Max. digging reach at ground level	mm	9509	9797	10232	10919
W - Min. dumping clearance	mm	4555	4054	3458	2785
Max. vertical digging depth	mm	4275	4795	5364	6165
X - Max. digging height	mm	11094	11292	11632	12210
Y - Max. dumping clearance	mm	8100	8319	8644	9245
Z - Min. swing radius	mm	2837	2665	2415	2531
Height at min. swing radius	mm	8998	8900	8863	8849

E305C

OPERATING WEIGHT

MONO BOOM		EL VERSION				LC VERSION			
M - Shoe width	mm	600	700	800	900	600	700	800	900
N - Maximum width	mm	2990	3090	3190	3290	3190	3290	3390	3490
Operating weight*	kg	29800	30180	30570	30950	29900	30280	30670	31050
Specific ground pressure	bar	0.67	0.58	0.51	0.46	0.67	0.58	0.51	0.46
Height of hand rail	mm	3240	3240	3240	3240	3240	3240	3240	3240

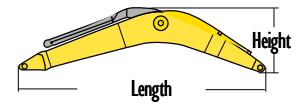
TRIPLE ARTICULATION BOOM		EL VERSION				LC VERSION			
M - Shoe width	mm	600	700	800	900	600	700	800	900
N - Maximum width	mm	2990	3090	3190	3290	3190	3290	3390	3490
Operating weight*	kg	30340	30720	31110	31490	30440	30820	31210	31590
Specific ground pressure	bar	0.68	0.59	0.52	0.47	0.68	0.59	0.52	0.47
Height of hand rail	mm	3240	3240	3240	3240	3240	3240	3240	3240



COMPONENT WEIGHTS & DIMENSIONS (mm)

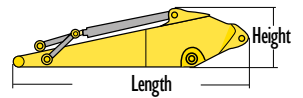
BOOM		MONO BOOM		TRIPLE ARTICULATION	
Length	mm	6408		min 4645 - max 6235	
Height	mm	1719		min 3310 - max 1357	
Width	mm	935		935	
Weight	kg	2100		2640	

* includes arm cylinder, piping & pin



ARM		2100	2400	3200	4000
Length	mm	3236	3506	4291	5091
Height	mm	1074	928	930	982
Width	mm	665	665	665	665
Weight	kg	1276	1265	1411	1740

* Includes bucket, cylinder, linkage and pin



WIDTH & HEIGHT

G - Upper structure width	mm	2950
H - Height to cab top	mm	3180
J - Tail height (w/o exhaust)	mm	2588
L - Ground clearance	mm	530

OTHER COMPONENT WEIGHTS

Upper Structure (w/o front attachment & counterweight)	kg	7150
Undercarriage EL (shoes 600 mm)	kg	10650
Undercarriage LC (shoes 600 mm)	kg	10750
Counterweight	kg	6200
Bucket 1.1m ³	kg	820

BREAKOUT FORCE

MONO BOOM / TRIPLE ARTICULATION					
Bucket	daN	19150	19150	19150	19150
Dipperstick	daN	19065	16345	13000	11215

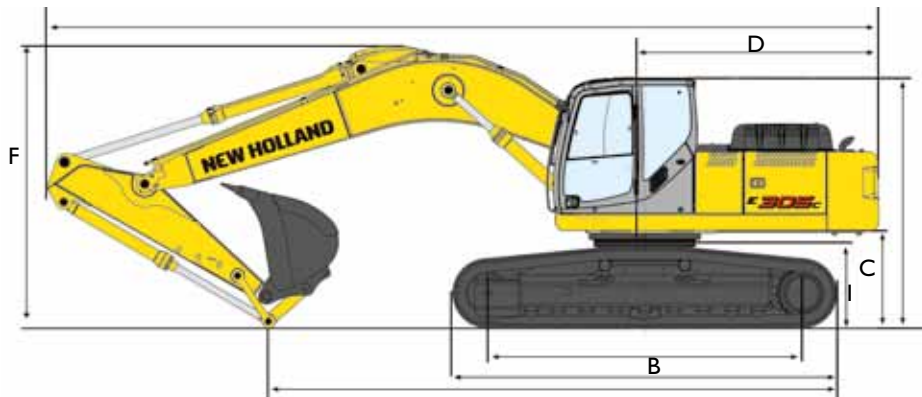
WITH "POWER BOOST" ON

MONO BOOM / TRIPLE ARTICULATION					
Bucket	daN	21050	21050	21050	21050
Dipperstick	daN	20955	17965	14400	12300

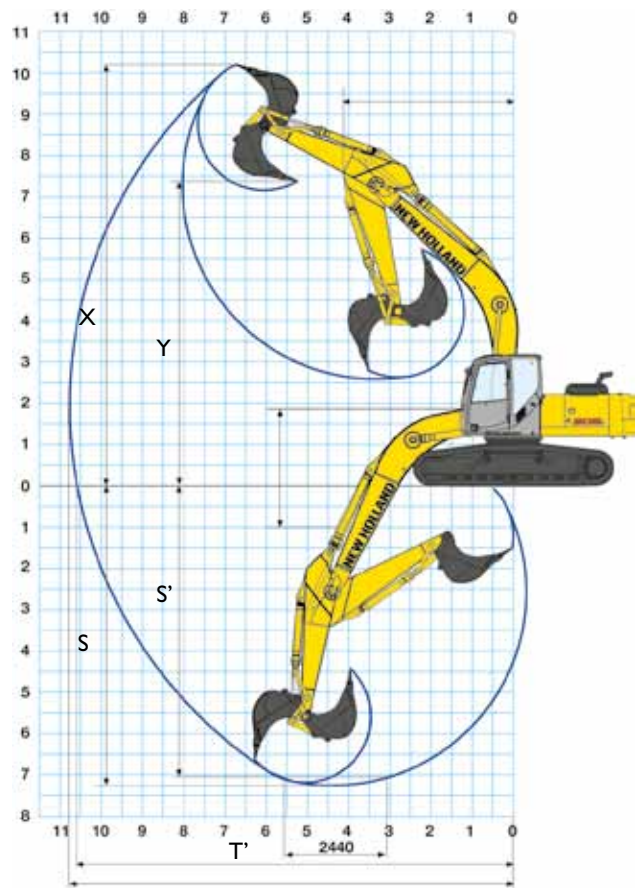
E305C

MONO BOOM

DIGGING PERFORMANCE & DIMENSIONS (mm)



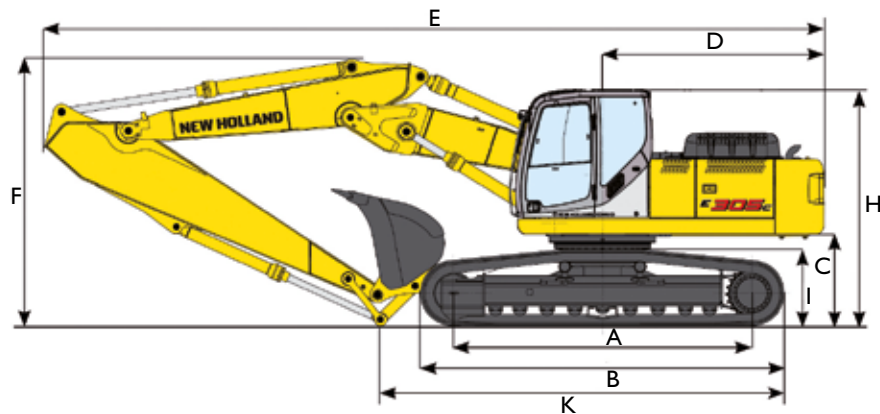
E305C MONO BOOM		
A - Center distance of tumbler	mm	4004
B - Overall length of crawler	mm	4870
C - Ground clearance of rear end	mm	1200
D - Radius of rear end	mm	3020
E - Overall length		
Arm 2100	mm	10570
Arm 2400	mm	10390
Arm 3200	mm	10280
Arm 4000	mm	10340
F - Boom height in transport position		
Arm 2100	mm	3570
Arm 2400	mm	3493
Arm 3200	mm	3216
Arm 4000	mm	3454
H - Height to cab top	mm	3180
I - Crawler height at tumbler center	mm	1025
K - Transport length on ground		
Arm 2100	mm	7209
Arm 2400	mm	6658
Arm 3200	mm	5437
Arm 4000	mm	4814



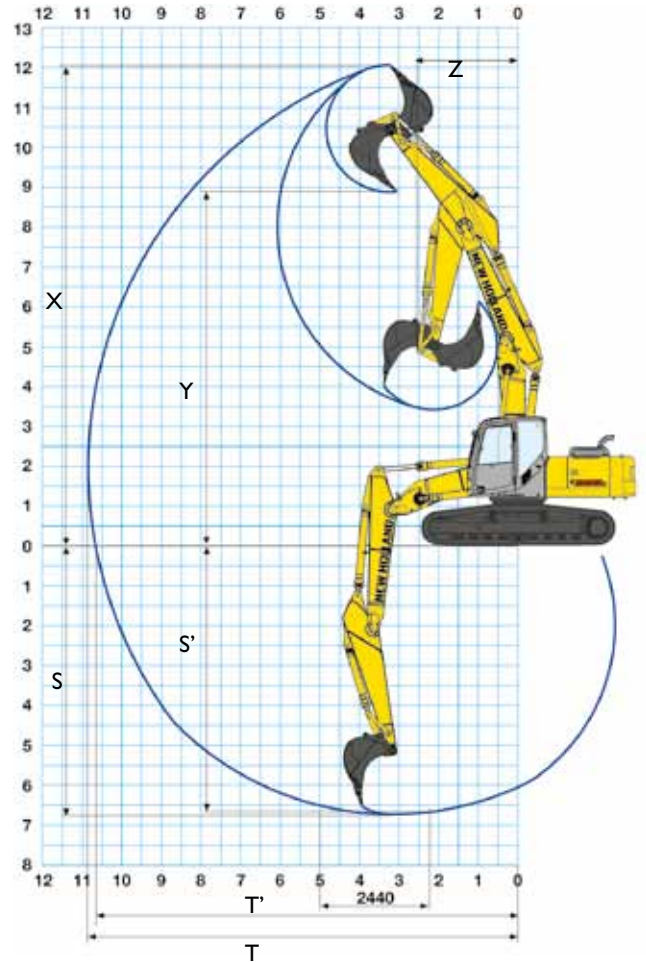
DIPPERSTICK		2100	2400	3200	4000
S - Max. digging depth	mm	6200	6500	7200	8000
S' - 2.4 m level. digging depth	mm	6000	6300	7300	7900
Min finish radius at ground level	mm	4100	3600	2600	2000
T - Max. digging reach	mm	9800	10100	10800	11600
T' - Max. digging reach at ground level	mm	9600	9900	10600	11400
W - Min. dumping clearance	mm	3735	3385	2581	1781
Max. vertical digging depth	mm	4300	5200	5800	6600
X - Max. digging height	mm	9600	9900	10200	10600
Y - Max. dumping clearance	mm	6800	7000	7300	7700
Z - Min. swing radius	mm	4200	4200	4200	4300
Height at min. swing radius	mm	8400	8400	8300	8300

E305C

TRIPLE ARTICULATION BOOM DIGGING PERFORMANCE & DIMENSIONS (mm)



		E305C TRIPLE ART.	
A - Center distance of tumbler	mm	4004	
B - Overall length of crawler	mm	4870	
C - Ground clearance of rear end	mm	1200	
D - Radius of rear end	mm	3020	
E - Overall length			
Arm 2100	mm	10570	
Arm 2400	mm	10390	
Arm 3200	mm	10280	
Arm 4000	mm	10340	
F - Boom height in transport position			
Arm 2100	mm	3570	
Arm 2400	mm	3493	
Arm 3200	mm	3216	
Arm 4000	mm	3454	
H - Height to cab top	mm	3180	
I - Crawler height at tumbler center	mm	1025	
K - Transport length on ground			
Arm 2100	mm	7209	
Arm 2400	mm	6658	
Arm 3200	mm	5437	
Arm 4000	mm	4814	



DIPPERSTICK		2100	2400	3200	4000
S - Max. digging depth	mm	5800	6100	6900	7700
S' - 2.4 m level. digging depth	mm	5700	6000	6800	7600
Min finish radius at ground level	mm	1800	-	-	-
T - Max. digging reach	mm	9900	10200	10900	11700
T' - Max. digging reach at ground level	mm	9700	10000	10800	11500
W - Min. dumping clearance	mm	4800	4400	3400	2600
Max. vertical digging depth	mm	4500	5200	5900	6600
X - Max. digging height	mm	11200	11500	12100	12700
Y - Max. dumping clearance	mm	8200	8400	9000	9700
Z - Min. swing radius	mm	3400	3200	2800	3000
Height at min. swing radius	mm	9300	9200	9100	9100



E265C

LIFTING CAPACITY EL VERSION

ONE-PIECE BOOM - DIPPERSTICK 2160 mm

HEIGHT	RADIUS OF LOAD														
	1.5 m		3.0 m		4.5 m		6.0 m		7.5 m		9.0 m		AT MAX REACH		REACH m
	FRONT	SIDE	FRONT	SIDE	FRONT	SIDE	FRONT	SIDE	FRONT	SIDE	FRONT	SIDE	FRONT	SIDE	
+9.0 m															
+7.5 m															
+6.0 m													5.9*	5.7	7.39
+4.5 m							6.6*	6.6*	6.2*x	5.4			6.1*	4.9	8.03
+3.0 m					10.2*	10.2*	7.7*	7.1	6.7*	5.3			6.4*	4.5	8.35
+1.5 m					12.2*	9.7	8.8*	6.7	7.3*	5.1			6.8*	4.4	8.39
0 m					13.1*	9.5	9.6*	6.5	7.7*	5.0			7.0	4.5	8.16
-1.5 m			13.2*	13.2*	13.3*	9.4	9.9*	6.5	7.8*	4.9			7.7	4.9	7.62
-3.0 m			17.9*	17.9*	12.7*	9.6	10.6*	10.0					8.4*	5.8	6.71
-4.5 m			15.0*	15.0*	10.8*	10.0							9.3*	8.2	5.22

TRIPLE ARTICULATION - DIPPERSTICK 2160 mm

HEIGHT	RADIUS OF LOAD															
	1.5 m		3.0 m		4.5 m		6.0 m		7.5 m		9.0 m		AT MAX REACH		REACH m	
	FRONT	SIDE	FRONT	SIDE	FRONT	SIDE	FRONT	SIDE	FRONT	SIDE	FRONT	SIDE	FRONT	SIDE		
+9.0 m														6.8*	6.8*	4.82
+7.5 m								7.2*	7.2*	5.7*	5.7*			5.3*	5.3x*	6.51
+6.0 m								7.6*	7.6*	5.4*	5.4*			4.7*	4.7*	7.54
+4.5 m					11.9*	11.9*	7.1*	7.1*	4.8*	4.8*	4.9*	4.9*		4.4*	4.4*	8.17
+3.0 m					9.4*	9.4*	5.7*	5.7*	4.8*	4.8*	5.2*	5.2		4.4*	4.4*	8.49
+1.5 m					15.4*	15.4*	7.7*	7.7*	5.5*	5.5*	5.5*	5.0		4.5*	4.3	8.53
0 m	21.5*	21.5*	13.1*	13.1*	11.2*	9.5	7.2*	6.5	5.8*	5.0				4.8*	4.4	8.30
-1.5 m	18.7*	18.7*	15.5*	15.5*	10.2*	9.7	7.4*	6.6						6.5*	5.6	6.88
-3.0 m																
-4.5 m																

ONE-PIECE BOOM - DIPPERSTICK 2500 mm

HEIGHT	RADIUS OF LOAD															
	1.5 m		3.0 m		4.5 m		6.0 m		7.5 m		9.0 m		AT MAX REACH		REACH m	
	FRONT	SIDE	FRONT	SIDE	FRONT	SIDE	FRONT	SIDE	FRONT	SIDE	FRONT	SIDE	FRONT	SIDE		
+9.0 m																
+7.5 m														4.9*	4.9*	6.83
+6.0 m										5.5*	5.5*			4.8*	4.8*	7.82
+4.5 m							6.2*	6.2*	5.8*	5.5			4.9*	4.6	8.43	
+3.0 m					9.5*	9.5*	7.4*	7.2	6.4*	5.3			5.1*	4.3	8.73	
+1.5 m					11.7*	9.9	8.5*	6.8	7.0*	5.1			5.6*	4.2	8.77	
0 m			7.7*	7.7*	12.9*	9.5	9.4*	6.6	7.6*	5.0			6.3*	4.2	8.55	
-1.5 m	8.6*	8.6*	12.4*	12.4*	13.3*	9.5	9.9*	6.5	7.8	4.9			7.1	4.5	8.04	
-3.0 m	13.2*	13.2*	18.4*	18.2*	13.0*	9.6	9.7*	6.5					8.0*	5.2	7.18	
-4.5 m			16.3*	16.3*	11.6*	9.9							8.8*	7.0	5.82	

TRIPLE ARTICULATION - DIPPERSTICK 2500 mm

HEIGHT	RADIUS OF LOAD															
	1.5 m		3.0 m		4.5 m		6.0 m		7.5 m		9.0 m		AT MAX REACH		REACH m	
	FRONT	SIDE	FRONT	SIDE	FRONT	SIDE	FRONT	SIDE	FRONT	SIDE	FRONT	SIDE	FRONT	SIDE		
+9.0 m														5.5*	5.5*	5.49
+7.5 m								7.0*	7.0*	5.4*	5.4*			4.8*	4.8*	7.02
+6.0 m								7.4*	7.4*	5.2*	5.2*	4.6*	4.6*	4.3*	4.3*	7.98
+4.5 m					12.6*	12.6*	7.3*	7.3*	4.3*	4.3*	4.7*	4.7*		4.1*	4.1*	8.58
+3.0 m					10.1*	10.1*	6.1*	6.1*	4.6*	4.6*	5.0*	5.0*		4.0*	4.0*	8.88
+1.5 m					13.1*	13.1*	7.1*	7.1*	5.2*	5.2*	5.4*	5.0		4.1*	4.1	8.92
0 m	9.9*	9.9*	10.8*	10.8*	10.1*	9.5	6.4*	6.4*	5.6*	4.9				4.4*	4.2	8.70
-1.5 m	11.9*	11.9*	12.8*	12.8*	11.9*	9.5	8.7*	6.5	5.8*	5.0				4.9*	4.5	8.20
-3.0 m	17.3*	17.3*	15.8*	15.8*	10.1*	9.6	7.7*	6.5						5.8*	5.1	7.36
-4.5 m			16.9*	16.9*	10.2*	10.0										

ONE-PIECE BOOM - DIPPERSTICK 2980 mm

HEIGHT	RADIUS OF LOAD															
	1.5 m		3.0 m		4.5 m		6.0 m		7.5 m		9.0 m		AT MAX REACH		REACH m	
	FRONT	SIDE	FRONT	SIDE	FRONT	SIDE	FRONT	SIDE	FRONT	SIDE	FRONT	SIDE	FRONT	SIDE		
+7.5 m														3.7*	3.7*	7.36
+6.0 m										4.9*	4.9*			3.6*	3.6*	8.29
+4.5 m										5.3*	5.3*			3.6*	3.6*	8.86
+3.0 m			13.8*	13.8*	8.6*	8.6*	6.8*	6.8*	6.0*	5.3	4.5*	4.1	3.8*	3.8	9.15	
+1.5 m			7.0*	7.0*	10.9*	10.0	8.0*	6.8	6.7*	5.1	5.1*	4.0	4.1*	3.9	9.19	
0 m			8.5*	8.5*	1.5*	9.5	9.1*	6.5	7.3*	6.4			4.6*	3.9	8.98	
-1.5 m	8.0*	8.0*	11.8*	11.8*	13.1*	9.4	9.7*	6.7	7.7	4.8			5.5*	4.2	8.49	
-3.0 m	11.6*	11.6*	16.3*	16.3*	13.1*	9.4	9.7*	6.4	7.6*	4.8			7.2*	4.7	7.69	
-4.5 m			17.3*	17.3*	12.1*	9.6	9.0*	5.5					7.2*	4.7	7.69	
-6.0 m																

TRIPLE ARTICULATION - DIPPERSTICK 2980 mm

HEIGHT	RADIUS OF LOAD															
	1.5 m		3.0 m		4.5 m		6.0 m		7.5 m		9.0 m		AT MAX REACH		REACH m	
	FRONT	SIDE	FRONT	SIDE	FRONT	SIDE	FRONT	SIDE	FRONT	SIDE	FRONT	SIDE	FRONT	SIDE		
+10.5 m														4.0*	4.0*	6.17
+9.0 m										5.3*	5.3*			3.7*	3.7*	7.56
+7.5 m								6.8*	6.8*	5.2*	5.2*	4.3*	4.3*	3.6*	3.6*	8.46
+6.0 m					11.9*	11.9*	7.4*	7.4*	4.8*	4.8*	4.5*	4.5*		3.6*	3.6*	9.02
+4.5 m	9.3*	9.3*	10.9*	10.9*	6.5*	6.5*	4.0*	4.0*	4.5*	4.5*				3.6*	3.6*	9.31
+3.0 m	9.5*	9.5*	10.6*	10.6*	6.3*	6.3*	4.8*	4.8*	4.9*	4.9*				3.7*	3.7*	9.35
+1.5 m	7.8*	7.8*	9.2*	9.2*	12.3*	9.4	5.8*	5.8*	5.5*	4.9				3.9*	3.8	9.14
0 m	9.8*	9.8*	11.9*	11.9*	10.6*	9.4	7.8*	6.4	5.7*	4.8				4.3*	4.1	8.66
-1.5 m	18.5*	18.5*	15.7*	15.7*			7.6*	6.6								
-3.0 m																

ONE-PIECE BOOM - DIPPERSTICK 3660 mm

HEIGHT	RADIUS OF LOAD															
	1.5 m		3.0 m		4.5 m		6.0 m		7.5 m		9.0 m		AT MAX REACH		REACH m	
	FRONT	SIDE	FRONT	SIDE	FRONT	SIDE	FRONT	SIDE	FRONT	SIDE	FRONT	SIDE	FRONT	SIDE		
+7.5 m														2.8*	2.8*	8.24
+6.0 m											3.0*	3.0*	2.8*	2.8*	5.07	
+4.5 m									4.7*	4.7*	4.2*	4.2*	2.8*	2.8*	9.60	
+3.0 m							6.0*	6.0*	5.4*	5.3	5.0*	4.1	2.9*	2.9*	9.87	
+1.5 m			9.9*	9.9*	9.8*	9.8*	7.3*	6.9	6.2*	5.1	5.5*	3.9	3.0*	3.0*	9.90	
0 m	4.1*	4.1*	8.7*	8.7*	11.7*	9.6	8.5*	6.5	6.9*	4.9	6.0*	3.8	3.3*	3.3*	9.91	
-1.5 m	6.8*	6.8*	10.7*	10.7*	12.7*	9.2	9.3*	6.3	7.4*	4.7	5.3*	3.8	3.8*	3.6	9.26	
-3.0 m	9.7*	9.7*	14.0*	14.0*	13.0*	9.2	9.6*	6.2	7.5	4.7			4.9*	4.6	8.58	
-4.5 m	13.1*	13.1*	18.4*	17.8	12.5*	9.3	9.3*	6.3					6.5*	4.9	7.42	
-6.0 m			15.4*	15.4*	10.7*	9.7							8.1*	7.0	5.73	

TRIPLE ARTICULATION - DIPPERSTICK 3660 mm

HEIGHT	RADIUS OF LOAD															
	1.5 m		3.0 m		4.5 m		6.0 m		7.5 m		9.0 m		AT MAX REACH		REACH m	
	FRONT	SIDE	FRONT	SIDE	FRONT	SIDE	FRONT	SIDE	FRONT	SIDE	FRONT	SIDE	FRONT	SIDE		
+10.5 m														3.6*	3.6*	5.32
+9.0 m										4.7*	4.7*			3.1*	3.1*	7.21
+7.5 m										5.0*	5.0*	2.8*	2.8*	2.8*	2.8*	8.43
+6.0 m										5.0*	5.0*	3.9*	3.9*	2.7*	2.7*	9.24
+4.5 m										7.1*	7.1*	5.1*	3.7*	2.8*	2.7*	9.76
+3.0 m	11.6*	11.6*	12.1*	12.1*	6.9*	6.9*	4.5*	4.5*	3.0*	3.0*	2.9*	2.9*	2.8*	2.8*	10.03	
+1.5 m	7.8*	7.8*	9.2*	9.2*	5.5*	5.5*	4.2*	4.2*	3.9*	3.9*	3.8*	3.8*	3.0*	3.0*	10.06	
0 m	6.4*	6.4*	9.0*	9.0*	7.4*	7.4*	5.1*	5.1*	4.6*	4.6*	4.0*	3.8	3.2*	3.2*	9.87	
-1.5 m	6.4*	6.4*	11.2*	11.2*	10.9*	9.2	6.4*	6.3	5.4*	4.7				3.6*	3.6	9.43
-3.0 m	10.4*	10.4*	13.6*	13.6*	11.4*	9.2	8.5*	6.3	5.5*	4.7				4.2*	4.0	8.71
-4.5 m	15.0*	15.0*	14.9*	14.9*	9.9*	9.4	7.1*	6.3								

As per ISO 10567 with excavator equipped with bucket. The indicated load is no more than 87% of hydraulic system lifting capacity or 75% of static tipping load. Values marked with an asterisk are limited by the hydraulic system.

E265C

LIFTING CAPACITY LC VERSION

ONE-PIECE BOOM - DIPPERSTICK 2160 mm

HEIGHT	RADIUS OF LOAD														REACH m		
	1.5 m		3.0 m		4.5 m		6.0 m		7.5 m		9.0 m		AT MAX REACH				
	FRONT	SIDE	FRONT	SIDE	FRONT	SIDE	FRONT	SIDE	FRONT	SIDE	FRONT	SIDE	FRONT	SIDE			
+9.0 m																	
+7.5 m																	
+6.0 m													5.9*	5.9*	7.39		
+4.5 m							6.6*	6.6*	6.2*	5.8			6.1*	5.3	8.03		
+3.0 m					10.2*	10.2*	7.7*	7.7	6.7*	5.7			6.4*	4.9	8.35		
+1.5 m					12.2*	10.6	8.8*	7.3	7.3*	5.5			6.8*	4.7	8.39		
0 m					13.1*	10.4	9.6*	7.1	7.7*	5.3			7.0	4.8	8.16		
-1.5 m			13.2*	13.2*	13.3*	10.3	9.9*	7.0	7.8	5.3			7.6	5.2	7.62		
-3.0 m			17.9*	17.9*	12.7*	10.5	9.6*	7.1					8.4*	6.2	6.71		
-4.5 m	15.0*	15.0*	10.8*	10.8*									9.3*	8.9	5.22		

TRIPLE ARTICULATION - DIPPERSTICK 2160 mm

HEIGHT	RADIUS OF LOAD														REACH m		
	1.5 m		3.0 m		4.5 m		6.0 m		7.5 m		9.0 m		AT MAX REACH				
	FRONT	SIDE	FRONT	SIDE	FRONT	SIDE	FRONT	SIDE	FRONT	SIDE	FRONT	SIDE	FRONT	SIDE			
+9.0 m															6.8*	6.8*	4.82
+7.5 m									7.2*	7.2*	5.7*	5.7*			5.3*	5.3*	6.51
+6.0 m									7.6*	7.6*	5.4*	5.4*			4.7*	4.7*	7.54
+4.5 m							11.9*	11.9*	7.1*	7.1*	4.8*	4.8*	4.9*	4.9*	4.4*	4.4*	8.17
+3.0 m	9.4*	9.4*			5.7*	5.7*	4.8*	4.8*	5.2*	5.2*					4.4*	4.4*	8.49
+1.5 m	15.4*	15.4*	7.7*	7.7*	5.5*	5.5*	5.5*	5.4							4.5*	4.5*	8.53
0 m	21.5*	21.5*	13.1*	13.1*	11.2*	10.4	7.2*	7.0	5.8*	5.3					4.8*	4.7	8.30
-1.5 m	14.5*	14.5*	13.1*	13.1*	11.4*	10.4	8.8*	7.0							5.4*	5.1	7.77
-3.0 m	18.7*	18.7*	15.5*	15.5*	10.2*	10.2*	7.4*	7.1							6.5*	6.1	6.88
-4.5 m																	

ONE-PIECE BOOM - DIPPERSTICK 2500 mm

HEIGHT	RADIUS OF LOAD														REACH m		
	1.5 m		3.0 m		4.5 m		6.0 m		7.5 m		9.0 m		AT MAX REACH				
	FRONT	SIDE	FRONT	SIDE	FRONT	SIDE	FRONT	SIDE	FRONT	SIDE	FRONT	SIDE	FRONT	SIDE			
+9.0 m																	
+7.5 m															4.9*	4.9*	6.83
+6.0 m										5.5*	5.5*			4.8*	4.8*	7.82	
+4.5 m							6.2*	6.2*	5.8*	5.8*			4.9*	4.9*	8.43		
+3.0 m					9.5*	9.5*	7.4*	7.4*	6.4*	5.7			5.1*	4.6	8.73		
+1.5 m					11.7*	10.8	8.5*	7.4	7.0*	5.5			5.6*	4.5	8.77		
0 m			7.7*	7.7*	12.9*	10.4	9.4*	7.1	7.6*	5.4			6.3*	4.5	8.55		
-1.5 m	8.6*	8.6*	12.4*	12.4*	13.3*	10.3*	9.9*	7.0	7.7	5.3			7.1	4.9	8.04		
-3.0 m	13.2*	13.2*	18.4*	18.4*	13.0*	10.5	9.7*	7.0					8.0*	5.7	7.18		
-4.5 m			16.3*	16.3*	11.6*	10.8							8.8*	7.6	5.82		

TRIPLE ARTICULATION - DIPPERSTICK 2500 mm

HEIGHT	RADIUS OF LOAD														REACH m		
	1.5 m		3.0 m		4.5 m		6.0 m		7.5 m		9.0 m		AT MAX REACH				
	FRONT	SIDE	FRONT	SIDE	FRONT	SIDE	FRONT	SIDE	FRONT	SIDE	FRONT	SIDE	FRONT	SIDE			
+9.0 m										7.3*	7.3*				5.5*	5.5*	5.49
+7.5 m									7.0*	7.0*	5.4*	5.4*			4.8*	4.8*	7.02
+6.0 m									7.4*	7.4*	5.2*	5.2*	4.6*	4.6*	4.3*	4.3*	7.98
+4.5 m					12.6*	12.6*	7.3*	7.3*	4.3*	4.3*	4.7*	4.7*			4.1*	4.1*	8.58
+3.0 m					10.0*	10.1*	6.1*	6.1*	4.6*	4.6*	5.0*	5.0*			4.0*	4.0*	8.88
+1.5 m					13.1*	13.1*	7.1*	7.1*	5.2*	5.2*	5.4*	5.4*			4.1*	4.1*	8.92
0 m	9.9*	9.9*	10.8*	10.8*	10.1*	10.1*	6.4*	6.4*	5.6*	5.3					4.4*	4.4*	8.70
-1.5 m	11.9*	11.9*	12.8*	12.8*	11.9*	10.4	8.7*	7.0	5.8*	5.3					4.9*	4.8	8.20
-3.0 m	17.3*	17.3*	15.8*	15.8*	10.1*	10.1*	7.7*	7.1							5.8*	5.5	7.36
-4.5 m					16.9*	16.9*	10.2*	10.2*									

ONE-PIECE BOOM - DIPPERSTICK 2980 mm

HEIGHT	RADIUS OF LOAD														REACH m		
	1.5 m		3.0 m		4.5 m		6.0 m		7.5 m		9.0 m		AT MAX REACH				
	FRONT	SIDE	FRONT	SIDE	FRONT	SIDE	FRONT	SIDE	FRONT	SIDE	FRONT	SIDE	FRONT	SIDE			
+7.5 m																	
+6.0 m															3.7*	3.7*	7.36
+4.5 m									4.9*	4.9*					3.6*	3.6*	8.29
+3.0 m									5.3*	5.3*					3.6*	3.6*	8.86
+1.5 m			13.8*	13.8*	8.6*	8.6*	6.8*	6.8*	6.0*	5.7	4.5*	4.4	3.8*	3.8*	9.15		
0 m			7.0*	7.0*	10.9*	10.9*	8.0*	7.4	6.7*	5.5	5.1*	4.3	4.1*	4.1*	9.19		
-1.5 m			8.5*	8.5*	12.5*	10.4	9.1*	7.1	7.3*	5.3			4.6*	4.2	8.98		
-3.0 m	8.0*	8.0*	11.8*	11.8*	13.1*	10.2	9.7*	6.9	7.7	5.2			5.5*	4.5	8.49		
-4.5 m	11.6*	11.6*	16.3*	16.3*	11.1*	10.3	9.7*	6.9	7.6*	5.2			7.2*	5.1	7.69		
-6.0 m			17.3*	17.3*	12.1*	10.5	9.0*	7.1					8.2*	6.5	6.44		

TRIPLE ARTICULATION - DIPPERSTICK 2980 mm

HEIGHT	RADIUS OF LOAD														REACH m		
	1.5 m		3.0 m		4.5 m		6.0 m		7.5 m		9.0 m		AT MAX REACH				
	FRONT	SIDE	FRONT	SIDE	FRONT	SIDE	FRONT	SIDE	FRONT	SIDE	FRONT	SIDE	FRONT	SIDE			
+10.5 m															4.0*	4.0*	6.17
+9.0 m															3.7*	3.7*	7.56
+7.5 m									6.8*	6.8*	5.2*	5.2*	4.3*	4.3*	3.6*	3.6*	8.46
+6.0 m							11.9*	11.9*	7.4*	7.4*	4.8*	4.8*	4.5*	4.5*	3.6*	3.6*	9.02
+4.5 m	9.3*	9.3*	10.9*	10.9*	6.5*	6.5*	4.0*	4.0*	4.5*	4.5*					3.6*	3.6*	9.31
+3.0 m	9.5*	9.5*	10.6*	10.6*	6.3*	6.3*	4.8*	4.8*	4.9*	4.9*					3.7*	3.7*	9.35
+1.5 m	7.8*	7.8*	9.2*	9.2*	8.9*	8.9*	5.8*	5.8*	5.5*	5.3					3.9*	3.9*	9.14
0 m	9.8*	9.8*	11.9*	11.9*	12.3*	10.3*	7.8*	6.9	5.7*	5.2					4.3*	4.3*	8.66
-1.5 m	13.5*	13.5*	15.1*	15.1*	10.6*	10.3	8.2*	6.9							5.1*	5.0	7.87
-3.0 m	18.5*	18.5*	15.7*	15.7*	10.3*	10.3*	7.6*	7.1									

ONE-PIECE BOOM - DIPPERSTICK 3660 mm

HEIGHT	RADIUS OF LOAD														REACH m		
	1.5 m		3.0 m		4.5 m		6.0 m		7.5 m		9.0 m		AT MAX REACH				
	FRONT	SIDE	FRONT	SIDE	FRONT	SIDE	FRONT	SIDE	FRONT	SIDE	FRONT	SIDE	FRONT	SIDE			
+7.5 m															2.8*	2.8*	8.24
+6.0 m											3.0*	3.0*	2.8*	2.8*	2.8*	2.8*	9.07
+4.5 m									4.7*	4.7*	4.2*	4.2*	2.8*	2.8*	2.8*	2.8*	9.60
+3.0 m								6.0*	6.0*	5.4*	5.4*	5.0*	4.4	2.9*	2.9*	9.87	
+1.5 m			9.9*	9.9*	9.8*	9.8*	7.3*	7.3*	6.2*	5.5	5.5*	4.2	3.0*	3.0*	9.90		
0 m	4.1*	4.1*	8.7*	8.7*	11.7*	10.5	8.5*	7.1	6.9*	5.2	6.0*	4.1	3.3*	3.3*	9.71		
-1.5 m	6.8*	6.8*	10.7*	10.7*	12.7*	10.1	9.3*	6.8	7.4*	5.1	5.3*	4.1	3.8*	3.8*	9.26		
-3.0 m	9.7*	9.7*	14.0*	14.0*	13.0*	10.1	9.6*	6.8	7.5	5.1			4.7*	4.3	8.53		
-4.5 m	13.1*	13.1*	18.4*	18.4*	12.5*	10.2	9.3*	6.8					6.5*	5.2	7.42		
-6.0 m			15.4*	15.4*	10.7*	10.6							8.1*	7.6	5.73		

TRIPLE ARTICULATION - DIPPERSTICK 3660 mm

HEIGHT	RADIUS OF LOAD														REACH m		
	1.5 m		3.0 m		4.5 m		6.0 m		7.5 m		9.0 m		AT MAX REACH				
	FRONT	SIDE	FRONT	SIDE	FRONT	SIDE	FRONT	SIDE	FRONT	SIDE	FRONT	SIDE	FRONT	SIDE			
+10.5 m															3.6*	3.6*	5.32
+9.0 m															3.1*	3.1*	7.21
+7.5 m															2.8*	2.8*	8.43
+6.0 m															2.7*	2.7*	9.24
+4.5 m															2.7*	2.7*	9.76
+3.0 m	11.6*	11.6*	12.1*	12.1*	6.9*	6.9*	4.5*	4.5*	3.0*	3.0*	2.9*	2.9*	2.8*	2.8*	2.8*	2.8*	10.03
+1.5 m	7.8*	7.8*	9.2*	9.2*	5.5*	5.5*	4.2*	4.2*	3.9*	3.9*	3.8*	3.8*	3.0*	3.0*	3.0*	3.0*	10.6
0 m	6.4*	6.4*	9.0*	9.0*	7.4*	7.4*	5.1*	5.1*	4.6*	4.6*	4.0*	4.0*	3.2*	3.2*	3.2*	3.2*	9.87
-1.5 m	6.4*	6.4*	11.2*	11.2*	10.9*	10.1	6.4*	6.4*	5.4	5.1</							

E305C

LIFTING CAPACITY EL VERSION

ONE-PIECE BOOM - DIPPERSTICK 2100 mm

HEIGHT	RADIUS OF LOAD														
	1.5 m		3.0 m		4.5 m		6.0 m		7.5 m		9.0 m		AT MAX REACH		REACH m
	FRONT	SIDE	FRONT	SIDE	FRONT	SIDE	FRONT	SIDE	FRONT	SIDE	FRONT	SIDE	FRONT	SIDE	
+9.0 m															
+7.5 m							6.4*	6.4*				6.4*	6.4*	6.22	
+6.0 m							6.6*	6.6*				6.5*	6.5*	7.29	
+4.5 m					9.2*	9.2*	7.5*	7.5*	6.8*	6.1		6.7*	5.6	7.94	
+3.0 m					11.7*	11.7*	8.7*	8.0	7.3*	5.9		7.0*	5.2	8.27	
+1.5 m					13.6*	11.1	9.7*	7.6	7.9*	5.7		7.3*	5.0	8.31	
0 m					14.2*	10.9	10.4*	7.4	8.3*	5.6		7.8*	5.1	8.07	
-1.5 m			14.9*	14.9*	14.0*	10.9	10.5*	7.3	8.3*	5.5		8.3*	5.5	7.53	
-3.0 m			17.8*	17.8*	13.1*	11.1	9.9*	7.4				8.9*	6.6	6.50	
-4.5 m			14.7*	14.7*	10.9*	10.9*						9.6*	9.6*	5.08	

TRIPLE ARTICULATION - DIPPERSTICK 2100 mm

HEIGHT	RADIUS OF LOAD															
	1.5 m		3.0 m		4.5 m		6.0 m		7.5 m		9.0 m		AT MAX REACH		REACH m	
	FRONT	SIDE	FRONT	SIDE	FRONT	SIDE	FRONT	SIDE	FRONT	SIDE	FRONT	SIDE	FRONT	SIDE		
+9.0 m							7.0*	7.0*						6.5*	6.5*	4.73
+7.5 m							6.7*	6.7*	5.4*	5.4*				5.0*	5.0*	6.44
+6.0 m							7.0*	7.0*	5.3*	5.3*				4.5*	4.5*	7.48
+4.5 m							6.7*	6.7*	4.7*	4.7*	4.5*	4.5*		4.2*	4.2*	8.12
+3.0 m					10.2*	10.2*	6.1*	6.1*	5.1*	5.1*	4.8*	4.8*		4.1*	4.1*	8.43
+1.5 m					20.0*	20.0*	8.5*	8.5*	6.0*	6.0*	5.3*	5.3*		4.2*	4.2*	8.48
0 m					19.7*	19.7*	12.4*	10.8	7.9*	7.3	5.5*	5.5		4.5*	4.5*	8.24
-1.5 m	18.2*	18.2*	16.2*	16.2*	11.3*	10.8	8.6*	7.3	5.5*	5.5*				5.1*	5.1*	7.71
-3.0 m	23.5*	23.5*	13.9*	13.9*	8.9*	8.9*	6.8*	6.8*						6.3*	6.3*	6.81
-4.5 m																

ONE-PIECE BOOM - DIPPERSTICK 2400 mm

HEIGHT	RADIUS OF LOAD															
	1.5 m		3.0 m		4.5 m		6.0 m		7.5 m		9.0 m		AT MAX REACH		REACH m	
	FRONT	SIDE	FRONT	SIDE	FRONT	SIDE	FRONT	SIDE	FRONT	SIDE	FRONT	SIDE	FRONT	SIDE		
+9.0 m																
+7.5 m														5.6*	5.6*	6.77
+6.0 m							6.2*	6.2*	6.1*	6.1*				5.4*	5.4*	7.77
+4.5 m					8.5*	8.5*	7.1*	7.1*	6.4*	6.1				5.5*	5.2	8.38
+3.0 m					11.0*	11.0*	8.3*	8.1	7.1*	5.9				5.8	4.8	8.69
+1.5 m					13.1*	11.2	9.4*	7.6	7.7*	5.7				6.4	4.7	8.73
0 m					14.0*	10.9	10.2*	7.4	8.1*	5.5				7.3*	4.7	8.50
-1.5 m			13.5*	13.5*	14.0*	10.9	10.5*	7.3	8.3*	5.5				7.7*	5.1	7.99
-3.0 m	15.2*	15.2*	18.7*	18.7*	13.4*	11.0	10.1*	7.3						8.3*	5.9	7.13
-4.5 m			15.9*	15.9*	11.5*	11.3								8.9*	8.1	5.75

TRIPLE ARTICULATION - DIPPERSTICK 2400 mm

HEIGHT	RADIUS OF LOAD															
	1.5 m		3.0 m		4.5 m		6.0 m		7.5 m		9.0 m		AT MAX REACH		REACH m	
	FRONT	SIDE	FRONT	SIDE	FRONT	SIDE	FRONT	SIDE	FRONT	SIDE	FRONT	SIDE	FRONT	SIDE		
+9.0 m							6.8*	6.8*						5.6*	5.6*	5.46
+7.5 m							6.6*	6.6*	5.1*	5.1*				4.5*	4.5*	7.00
+6.0 m							7.0*	7.0*	4.9*	4.9*	4.4*	4.4*		4.0*	4.0*	7.96
+4.5 m					12.0*	12.0*	7.1*	7.1*	4.6*	4.6*	4.6*	4.6*		3.8*	3.8*	8.56
+3.0 m					9.7*	9.7*	5.8*	5.8*	4.6*	4.6*	4.9*	4.9*		3.7*	3.7*	8.86
+1.5 m					14.3*	14.3*	7.9*	7.9*	5.3*	5.3*	5.1*	5.1*		3.8*	3.8*	8.90
0 m	20.0*	20.0*	12.6*	12.6*	12.0*	10.7	7.2*	7.2*	5.3*	5.3*				4.1*	4.1*	8.68
-1.5 m	14.4*	14.4*	12.7*	12.7*	11.6*	10.7	8.7*	7.2	5.6*	5.4				4.6*	4.6*	8.18
-3.0 m	19.6*	19.6*	13.8*	13.8*	9.1*	9.1*	7.4*	7.3						5.5*	5.5*	7.34
-4.5 m	23.4*	23.4*	13.18*	13.18*	9.3*	9.3*										

ONE-PIECE BOOM - DIPPERSTICK 3200 mm

HEIGHT	RADIUS OF LOAD															
	1.5 m		3.0 m		4.5 m		6.0 m		7.5 m		9.0 m		AT MAX REACH		REACH m	
	FRONT	SIDE	FRONT	SIDE	FRONT	SIDE	FRONT	SIDE	FRONT	SIDE	FRONT	SIDE	FRONT	SIDE		
+7.5 m									4.0*	4.0*				3.2*	3.2*	7.71
+6.0 m									5.3*	5.3*				3.1*	3.1*	8.60
+4.5 m									6.1*	6.1*	5.7*	5.7*	3.9*	3.9*	3.2*	9.15
+3.0 m			15.6*	15.6*	9.5*	9.5*	7.4*	7.4*	6.4*	5.9	5.4*	4.6	3.3*	3.3*	9.44	
+1.5 m			7.2*	7.2*	11.9*	11.4	8.7*	7.7	7.1*	5.7	6.2*	4.4	3.5*	3.5*	9.47	
0 m			8.9*	8.9*	13.4*	10.9	9.7*	7.4	7.7*	5.5	5.9*	4.3	3.9*	3.9*	9.27	
-1.5 m	8.7*	8.7*	12.2*	12.2*	13.9*	10.7	10.2*	7.2	8.1*	5.4				4.6*	4.4	8.80
-3.0 m	12.1*	12.1*	16.5*	16.5*	13.7*	10.7	10.2*	7.1	8.0*	5.4				5.9*	5.0	8.02
-4.5 m	16.1*	16.1*	17.9*	17.9*	12.6*	0.9	9.4*	7.3						8.0*	6.2	6.84
-6.0 m					9.4*	9.4*								8.8*	8.8*	4.94

TRIPLE ARTICULATION - DIPPERSTICK 3200 mm

HEIGHT	RADIUS OF LOAD															
	1.5 m		3.0 m		4.5 m		6.0 m		7.5 m		9.0 m		AT MAX REACH		REACH m	
	FRONT	SIDE	FRONT	SIDE	FRONT	SIDE	FRONT	SIDE	FRONT	SIDE	FRONT	SIDE	FRONT	SIDE		
+10.5 m														4.1*	4.1*	4.52
+9.0 m														3.3*	3.3*	6.65
+7.5 m														3.0*	3.0*	7.95
+6.0 m									6.3*	6.3*	4.9*	4.9*	2.9*	2.9*	2.9*	8.81
+4.5 m					11.2*	11.2*	6.9*	6.9*	4.7*	4.7*	4.1*	4.1*	2.9*	2.9*	2.9*	9.36
+3.0 m	10.8*	10.8*	10.5*	10.5*	6.2*	6.2*	4.1*	4.1*	4.2*	4.2*	3.6*	3.6*	3.0*	3.0*	9.63	
+1.5 m	11.7*	11.7*	10.8*	10.8*	6.5*	6.5*	4.8*	4.8*	4.6*	4.6*	3.7*	3.7*	3.2*	3.2*	9.67	
0 m	8.5*	8.5*	9.6*	9.6*	9.3*	9.3*	5.9*	5.9*	5.1*	5.1*	3.7*	3.7*	3.4*	3.4*	9.47	
-1.5 m	10.4*	10.4*	12.4*	12.4*	12.7*	10.5	7.7*	7.1	5.3*	5.3*				3.7*	3.7*	9.01
-3.0 m	13.9*	13.9*	13.3*	13.3*	10.8*	10.6	8.4*	7.1	5.1*	5.1*				4.3*	4.3*	8.26

ONE-PIECE BOOM - DIPPERSTICK 4000 mm

HEIGHT	RADIUS OF LOAD															
	1.5 m		3.0 m		4.5 m		6.0 m		7.5 m		9.0 m		AT MAX REACH		REACH m	
	FRONT	SIDE	FRONT	SIDE	FRONT	SIDE	FRONT	SIDE	FRONT	SIDE	FRONT	SIDE	FRONT	SIDE		
+7.5 m														2.5*	2.5*	8.65
+6.0 m														3.6*	3.6*	9.45
+4.5 m									4.9*	4.9*	4.8*	4.7	2.4*	2.4*	9.95	
+3.0 m									6.3*	6.3*	5.6*	5.6*	5.2*	4.5	2.5*	10.21
+1.5 m					11.1*	11.1*	10.4*	10.4*	7.7*	7.7	6.4*	5.6	5.7*	4.3	2.6*	10.25
0 m	4.7*	4.7*	9.5*	9.5*	12.3*	10.8	8.9*	7.3	7.1*	5.4	6.1*	4.2	2.9*	2.9*	10.6	
-1.5 m	7.3*	7.3*	11.3*	11.3*	13.4*	10.4	9.7*	7.0	7.7*	5.2	6.4*	4.1	3.3*	3.3*	9.63	
-3.0 m	10.1*	10.1*	14.3*	14.3*	13.6*	10.3	10.0*	6.9	7.9*	5.1				4.0*	4.0*	8.93
-4.5 m	13.2*	13.2*	18.5*	18.5*	13.0*	10.5	9.7*	6.9	7.5*	5.2				5.4*	4.9	7.88
-6.0 m			16.1*	16.1*	11.2*	10.8	8.2*	7.2						7.7*	6.8	6.31

TRIPLE ARTICULATION - DIPPERSTICK 4000 mm

HEIGHT	RADIUS OF LOAD															
	1.5 m		3.0 m		4.5 m		6.0 m		7.5 m		9.0 m		AT MAX REACH		REACH m	
	FRONT	SIDE	FRONT	SIDE	FRONT	SIDE	FRONT	SIDE	FRONT	SIDE	FRONT	SIDE	FRONT	SIDE		
+10.5 m														3.0*	3.0*	6.04
+9.0 m														2.5*	2.5*	7.76
+7.5 m														2.3*	2.3*	8.90
+6.0 m														2.2*	2.2*	9.67
+4.5 m									6.3*	6.3*	4.8*	4.8*	3.2*	2.2*	2.2*	10.17
+3.0 m	16.1*	16.1*	11.0*	11.0*	6.6*	6.6*	4.3*	4.3*	3.2*	3.2*	2.4*	2.4*	2.3*	2.3*	10.42	
+1.5 m	7.4*	7.4*	8.9*	8.9*	5.3*	5.3*	3.9*	3.9*	3.4*	3.4*	3.3*	3.3*	2.4*	2.4*	10.46	
0 m	6.9*	6.9*	9.3*	9.3*	7.3*	7.3*	4.9*	4.9*	4.0*	4.0*	3.5*	3.5*	2.5*	2.5*	10.27	
-1.5 m	7.0*	7.0*	11.7*	11.7*	11.2*	10.2	6.4*	6.4*	4.7*	4.7*	3.5*	3.5*	2.8*	2.8*	9.85	
-3.0 m	10.8*	10.8*	14.1*	14.1*	11.7*	10.2	8.2*	6.8	4.9*	4.9*				3.4*	3.4*	9.17
-4.5 m	14.1*	14.1*	13.0*	13.0*	9.2*	9.2*	7.2*	6.9	4.9*	4.9*				4.1*	4.1*	8.15

</

E305C

LIFTING CAPACITY LC VERSION

ONE-PIECE BOOM - DIPPERSTICK 2100 mm

HEIGHT	RADIUS OF LOAD														
	1.5 m		3.0 m		4.5 m		6.0 m		7.5 m		9.0 m		AT MAX REACH		REACH m
	FRONT	SIDE	FRONT	SIDE	FRONT	SIDE	FRONT	SIDE	FRONT	SIDE	FRONT	SIDE	FRONT	SIDE	
+9.0 m															
+7.5 m							6.4*	6.4*				6.4*	6.4*	6.22	
+6.0 m							6.6*	6.6*				6.5*	6.5*	7.29	
+4.5 m					9.2*	9.2*	7.5*	7.5*	6.8*	6.1		6.7*	5.6	7.94	
+3.0 m					11.7*	11.7*	8.7*	8.0	7.3*	5.9		7.0*	5.2	8.27	
+1.5 m					13.5*	11.1	9.7*	7.6	7.9*	5.7		7.3*	5.0	8.31	
0 m					14.2*	10.9	10.4*	7.4	8.3*	5.6		7.8*	5.1	8.07	
-1.5 m			14.9*	14.9*	14.0*	10.9	10.5*	7.4	8.3*	5.6		8.3*	5.6	7.53	
-3.0 m			17.8*	17.8*	13.0*	11.1	9.9*	7.5				8.9*	6.6	6.60	
-4.5 m			14.6*	14.6*	10.8*	10.8*						9.6*	9.6*	5.08	

TRIPLE ARTICULATION - DIPPERSTICK 2100 mm

HEIGHT	RADIUS OF LOAD																	
	1.5 m		3.0 m		4.5 m		6.0 m		7.5 m		9.0 m		AT MAX REACH		REACH m			
	FRONT	SIDE	FRONT	SIDE	FRONT	SIDE	FRONT	SIDE	FRONT	SIDE	FRONT	SIDE	FRONT	SIDE				
+9.0 m							7.0*	7.0*						6.5*	6.5*	4.73		
+7.5 m							6.6*	6.6*	5.4*	5.4*				5.0*	5.0*	6.44		
+6.0 m							7.0*	7.0*	5.3*	5.3*				4.4*	4.4*	7.48		
+4.5 m							6.7*	6.7*	4.7*	4.7*	4.5*	4.5*		4.2*	4.2*	8.12		
+3.0 m							10.2*	10.2*	6.1*	6.1*	5.1*	5.1*	4.8*	4.8*	4.1*	4.1*	8.43	
+1.5 m							20.0*	20.0*	8.5*	8.5*	6.0*	5.3*	5.3*		4.2*	4.2*	8.48	
0 m							19.7*	19.7*	12.4*	10.9	7.9*	7.3	5.5*	5.5		4.5*	4.5*	8.24
-1.5 m	18.2*	18.2*	16.2*	16.2*	11.3*	10.8	8.6*	7.3	5.5*	5.5*				5.1*	5.1*	7.71		
-3.0 m	23.5*	23.5*	13.9*	13.9*	8.9*	8.9*	6.8*	6.8*						6.3*	6.3*	6.81		
-4.5 m																		

ONE-PIECE BOOM - DIPPERSTICK 2400 mm

HEIGHT	RADIUS OF LOAD															
	1.5 m		3.0 m		4.5 m		6.0 m		7.5 m		9.0 m		AT MAX REACH		REACH m	
	FRONT	SIDE	FRONT	SIDE	FRONT	SIDE	FRONT	SIDE	FRONT	SIDE	FRONT	SIDE	FRONT	SIDE		
+9.0 m																
+7.5 m														5.6*	5.6*	6.77
+6.0 m							6.2*	6.2*	6.1*	6.1*				5.4*	5.4*	7.77
+4.5 m					8.5*	8.5*	7.1*	7.1*	6.4*	6.2				5.5*	5.2	8.38
+3.0 m					11.0*	11.0*	8.3*	8.1	7.0*	5.9				5.8*	4.8	8.69
+1.5 m					13.1*	11.3	9.4*	7.7	7.7*	5.7				6.4*	4.7	8.73
0 m					14.0*	10.9	10.2*	7.4	8.1*	5.6				7.3*	4.8	8.50
-1.5 m			13.5*	13.5*	13.4*	11.0	10.5*	7.3	8.3*	5.5				7.7*	5.1	7.99
-3.0 m	15.2*	15.2*	18.7*	18.7*	11.0*	13.4	10.1*	7.4						8.3*	5.9	7.13
-4.5 m			15.9*	15.9*	11.5*	11.3								8.9*	8.1	5.75

TRIPLE ARTICULATION - DIPPERSTICK 2400 mm

HEIGHT	RADIUS OF LOAD																	
	1.5 m		3.0 m		4.5 m		6.0 m		7.5 m		9.0 m		AT MAX REACH		REACH m			
	FRONT	SIDE	FRONT	SIDE	FRONT	SIDE	FRONT	SIDE	FRONT	SIDE	FRONT	SIDE	FRONT	SIDE				
+9.0 m														5.6*	5.6*	5.46		
+7.5 m									6.8*	6.8*	5.1*	5.1*				4.5*	4.5*	7.00
+6.0 m							6.6*	6.6*	4.9*	4.9*	4.4*	4.4*				4.0*	4.0*	7.96
+4.5 m							12.0*	12.0*	7.0*	7.0*	4.6*	4.6*	4.6*	4.6*		3.8*	3.8*	8.56
+3.0 m							9.7*	9.7*	7.1*	7.1*	4.6*	4.6*	4.9*	4.9*		3.7*	3.7*	8.86
+1.5 m							14.3*	14.3*	5.8*	5.8*	5.3*	5.3*	5.1*	5.1*		3.8*	3.8*	8.90
0 m	20.0*	20.0*	12.6*	12.6*	7.9*	7.9*	7.2*	7.2*	5.3*	5.3*				4.1*	4.1*	8.68		
-1.5 m	14.4*	14.4*	12.7*	12.7*	12.0*	10.8	8.7*	7.2	5.6*	5.5				4.6*	4.6*	8.18		
-3.0 m	19.6*	19.6*	13.8*	13.8*	11.6*	10.8	7.4*	7.3						5.5*	5.5*	7.34		
-4.5 m	23.4*	23.4*	13.8*	13.8*	9.3*	9.3*												

ONE-PIECE BOOM - DIPPERSTICK 3200 mm

HEIGHT	RADIUS OF LOAD																
	1.5 m		3.0 m		4.5 m		6.0 m		7.5 m		9.0 m		AT MAX REACH		REACH m		
	FRONT	SIDE	FRONT	SIDE	FRONT	SIDE	FRONT	SIDE	FRONT	SIDE	FRONT	SIDE	FRONT	SIDE			
+7.5 m									4.0*	4.0*				3.2*	3.2*	7.71	
+6.0 m									5.3*	5.3*				3.1*	3.1*	8.60	
+4.5 m									6.1*	6.1*	5.7*	5.7*	3.9*	3.9*	3.2*	3.2*	9.15
+3.0 m			15.6*	15.6*	9.5*	9.5*	7.4*	7.4*	6.4*	6.0	5.4*	4.6	3.3*	3.3*	3.3*	3.3*	9.44
+1.5 m			7.2*	7.2*	11.9*	11.9*	8.7*	7.7	7.1*	5.7	6.2*	4.4	3.5*	3.5*	3.5*	3.5*	9.47
0 m			8.9*	8.9*	13.4*	10.9	9.7*	7.4	7.7*	5.5	5.9*	4.3	3.9*	3.9*	3.9*	3.9*	9.27
-1.5 m	8.7*	8.7*	12.2*	12.2*	13.9*	10.7	10.2*	7.2	8.1*	5.4				4.6*	4.4	8.80	
-3.0 m	12.1*	12.1*	16.5*	16.5*	13.7*	10.7	10.2*	7.2	8.0*	5.4				5.9*	5.0	8.02	
-4.5 m	16.1*	16.1*	17.9*	17.9*	12.6*	11.0	9.4*	7.3						8.0*	6.2	6.84	
-6.0 m					9.7*	9.7*								8.8*	8.8*	4.94	

TRIPLE ARTICULATION - DIPPERSTICK 3200 mm

HEIGHT	RADIUS OF LOAD																	
	1.5 m		3.0 m		4.5 m		6.0 m		7.5 m		9.0 m		AT MAX REACH		REACH m			
	FRONT	SIDE	FRONT	SIDE	FRONT	SIDE	FRONT	SIDE	FRONT	SIDE	FRONT	SIDE	FRONT	SIDE				
+10.5 m														4.1*	4.1*	4.52		
+9.0 m														3.3*	3.3*	6.65		
+7.5 m														3.0*	3.0*	7.95		
+6.0 m									6.3*	6.3*	4.9*	4.9*	2.9*	2.9*		2.9*	2.9*	8.81
+4.5 m							11.2*	11.2*	6.9*	6.9*	4.7*	4.7*	4.1*	4.1*	2.9*	2.9*	2.9*	9.36
+3.0 m	10.8*	10.8*	10.5*	10.5*	6.2*	6.2*	4.1*	4.1*	4.2*	4.2*	3.6*	3.6*	3.0*	3.0*	3.0*	3.0*	9.63	
+1.5 m	11.7*	11.7*	10.8*	10.8*	6.5*	6.5*	4.8*	4.8*	4.6*	4.6*	3.7*	3.7*	3.2*	3.2*	3.2*	3.2*	9.67	
0 m	8.5*	8.5*	9.6*	9.6*	9.3*	9.3*	5.9*	5.9*	5.1*	5.1*	3.7*	3.7*	3.4*	3.4*	3.4*	3.4*	9.47	
-1.5 m	10.4*	10.4*	12.4*	12.4*	13.2*	10.6	7.7*	7.1	5.3*	5.3*				3.7*	3.7*	3.7*	9.01	
-3.0 m	13.9*	13.9*	13.3*	13.3*	10.8*	10.6	8.4*	7.1	5.1*	5.1*				4.3*	4.3*	4.3*	8.26	

ONE-PIECE BOOM - DIPPERSTICK 4000 mm

HEIGHT	RADIUS OF LOAD																	
	1.5 m		3.0 m		4.5 m		6.0 m		7.5 m		9.0 m		AT MAX REACH		REACH m			
	FRONT	SIDE	FRONT	SIDE	FRONT	SIDE	FRONT	SIDE	FRONT	SIDE	FRONT	SIDE	FRONT	SIDE				
+7.5 m														2.5*	2.5*	8.65		
+6.0 m														3.6*	3.6*	2.4*	2.4*	9.45
+4.5 m									4.9*	4.9*	4.8*	4.7	2.4*	2.4*	2.4*	2.4*	9.95	
+3.0 m									6.3*	6.3*	5.6*	5.6*	5.2*	4.5	2.5*	2.5*	10.21	
+1.5 m									11.1*	11.1*	10.4*	10.4*	7.7*	7.7*	6.4*	2.6*	2.6*	10.25
0 m	4.7*	4.7*	9.5*	9.5*	12.3*	10.9	8.9*	7.3	7.1*	5.4	6.1*	4.2	2.9*	2.9*	2.9*	2.9*	10.06	
-1.5 m	7.3*	7.3*	11.3*	11.3*	13.4*	10.5	9.7*	7.0	7.7*	5.2	6.4*	4.1	3.3*	3.3*	3.3*	3.3*	9.63	
-3.0 m	10.1*	10.1*	14.3*	14.3*	13.6*	10.4	10.0*	6.9	7.9*	5.1				4.0*	4.0*	4.0*	8.93	
-4.5 m	13.2*	13.2*	18.5*	18.5*	13.0*	10.5	9.7*	6.9	7.5*	5.2				5.4*	4.9	7.888		
-6.0 m			16.1*	16.1*	11.2*	10.8	8.2*	7.2						7.7*	6.8	6.31		

TRIPLE ARTICULATION - DIPPERSTICK 4000 mm

HEIGHT	RADIUS OF LOAD																	
	1.5 m		3.0 m		4.5 m		6.0 m		7.5 m		9.0 m		AT MAX REACH		REACH m			
	FRONT	SIDE	FRONT	SIDE	FRONT	SIDE	FRONT	SIDE	FRONT	SIDE	FRONT	SIDE	FRONT	SIDE				
+10.5 m														2.9*	2.9*			6.04
+9.0 m														4.4*	4.4*	2.5*	2.5*	7.76
+7.5 m														4.4*	4.4*	3.4*	3.4*	8.90
+6.0 m														4.4*	4.4*	3.3*	3.3*	9.67
+4.5 m									6.3*	6.3*	4.8*	4.8*	3.2*	3.2*	2.2*	2.2*	2.2*	10.17
+3.0 m	16.1*	16.1*	11.0*	11.0*	6.6*	6.6*	4.3*	4.3*	3.2*	3.2*	2.4*	2.4*	2.3*	2.3*	2.3*	2.3*	10.42	
+1.5 m	7.4*	7.4*	8.9*	8.9*	5.3*	5.3*	3.9*	3.9*	3.4*	3.4*	3.3*	3.3*	2.4*	2.4*	2.4*	2.4*	10.46	
0 m	6.9*	6.9*	9.3*	9.3*	7.3*	7.3*	4.9*	4.9*	4.0*	4.0*	3.5*	3.5*	2.5*	2.5*	2.5*	2.5*	10.27	
-1.5 m	7.0*																	

PARTS AND SERVICE

The New Holland dealer network is, in itself, the best guarantee of continued productivity for the machines it delivers to its customers. New Holland service technicians are fully equipped to resolve all maintenance and repair issues, with each and every service point providing the high standards they are obliged to observe under New Holland's stringent quality guidelines.

The New Holland global parts network ensures fast, reliable, replacement parts for less downtime, increased productivity and, of course, profitable operation for its customers.



AT YOUR OWN DEALERSHIP

The information contained in this brochure is intended to be of general nature only. The NEW HOLLAND KOBELCO CONSTRUCTION MACHINERY S.p.A. company may at any time and from time to time, for technical or other necessary reasons, modify any of the details or specifications of the product described in this brochure. Illustrations do not necessarily show products in standard conditions. The dimensions, weights and capacities shown herein, as well as any conversion data used, are approximate only and are subject to variations within normal manufacturing techniques.

Published by NEW HOLLAND KOBELCO CONSTRUCTION MACHINERY S.p.A.
Printed in Italy - MediaCross Firenze - Cod 30622GB - Printed 02/11

Printed on recycled paper
CoC-FSC 000010 CQ Mixed sources



ELEMENTAL
CHLORINE
FREE
GUARANTEED



BUILT AROUND YOU

WWW.NEWHOLLAND.COM